

MOBI[®]

PAINTS

WEATHERSAFE

100 % ACRYLIC BASED



MOBI[®] PAINTS

WEATHERSAFE

100 % ACRYLIC BASED

Also available in White 300 & Black 399
These Patterns are Approximate colours only.



Cameo 306



Autumn Stone 395



Apple Green New 3400



Desert Dawn 396



Mobi Cream 304



Off White 303



Evening Blush 397



Tea Rose 319



Green Yellow 367



Sweet Peach New 3402



Ivory New 3403



Sugar Cane 302



Antelope 315



Beige 307



Forest Green New 3401



Coral Reef 384



Almond 308



Icy Lemon 394



Roof Tile 321



Terracotta 320



Spring Green 330



Fresh Orange 392



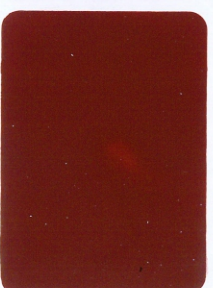
Hopsack 309



Golden Needles 391



Beaver 387



Red Oxide 323



Jade 331



Molten Bronze 379



Cinnamon New 3406



Hazelwood 393



Rex Yellow 388



Nato Green 329



Ash White 324



Sunhat 305



Magnolia 310

Discounted
Shades



Mobi Pink 375



Sea Wind 364



Wirework Grey *New* 3405



Silk Stone *New* 3408



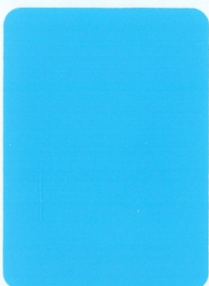
Camel Coat 390



Dolly 354



Red Rose 389



Electric Blue 380



Dove Grey 325



Clay 316



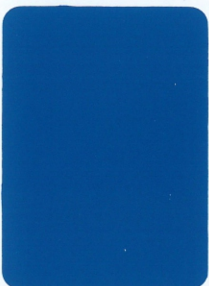
Dusty Stone *New* 3407



Sahara Sand 313



Sweet Jewel 351



Madagascar Blue 336



Goose Wing 327



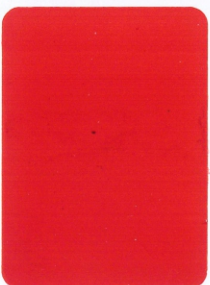
Lilac Dream 386



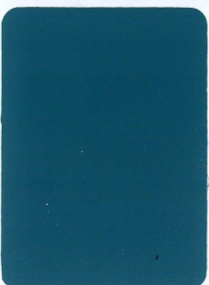
Portland *New* 3410



Willow Branch 344



Tile Red 322



Admiral 328



Charcoal 385



Sky Grey 326



Indigo *New* 3411



Forest 374

MOBI[®] PAINTS

WEATHERSAFE
100 % ACRYLIC BASED

Weather Safe is a premium quality emulsion paint based on pure acrylic, non-faded pigments and additives especially to control the growth of algae & fungi. It has a unique durability and better opacity with smooth brushability. It provides brickwork, plaster, wallboards and cement rendering.



RECOMMENDED PAINT SYSTEM

For optimal performance



Bare wall surface



Mobi Exterior Primer
(1 coat)



Mobi Exterior
Fine Filler
(1-2 coats)



Mobi
Weather Safe
(3-4 coats)



Mobi Exterior Primer

- 100% Acrylic Based
- Protects Top Coat
- Highly Adhesive
- For Exterior & Interior



Mobi Exterior Fine Filler

- Flate Finish
- Water Base
- Strong Adhesion

New Mubeen Paint Industries (Pvt.) LTD.

Head Office:

Ph: 048-3710739,3717213, +92-302-8602213

Info@mobipaints.com instagram/mobipaints

facebook/mobipaints www.mobipaints.com

Distributor Of Afghansitan:

Mohammad Shohaib Rahan LTD.

Kabul Office: +93-777122166,785959031



Scan Here
for Detail